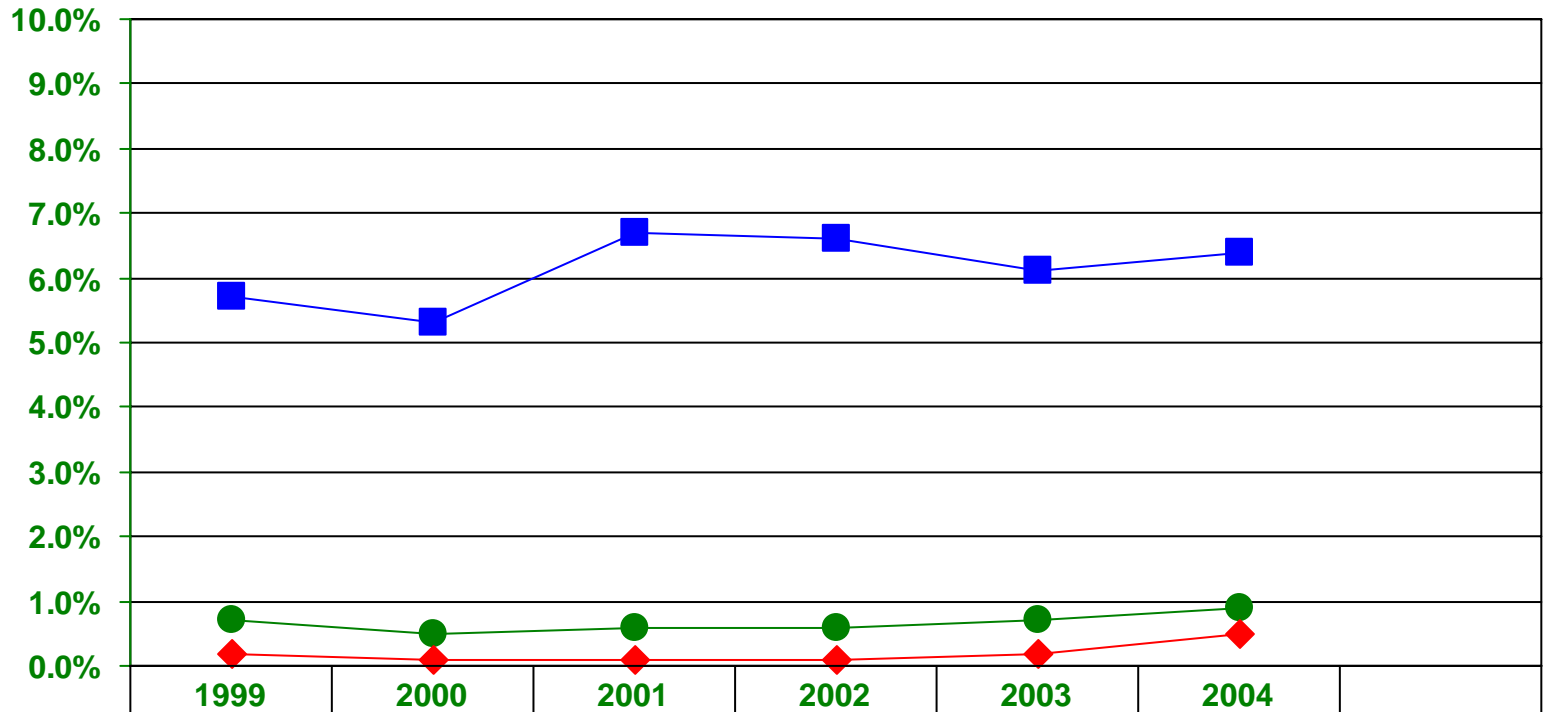


# Improper Payment Rates For Overpayments

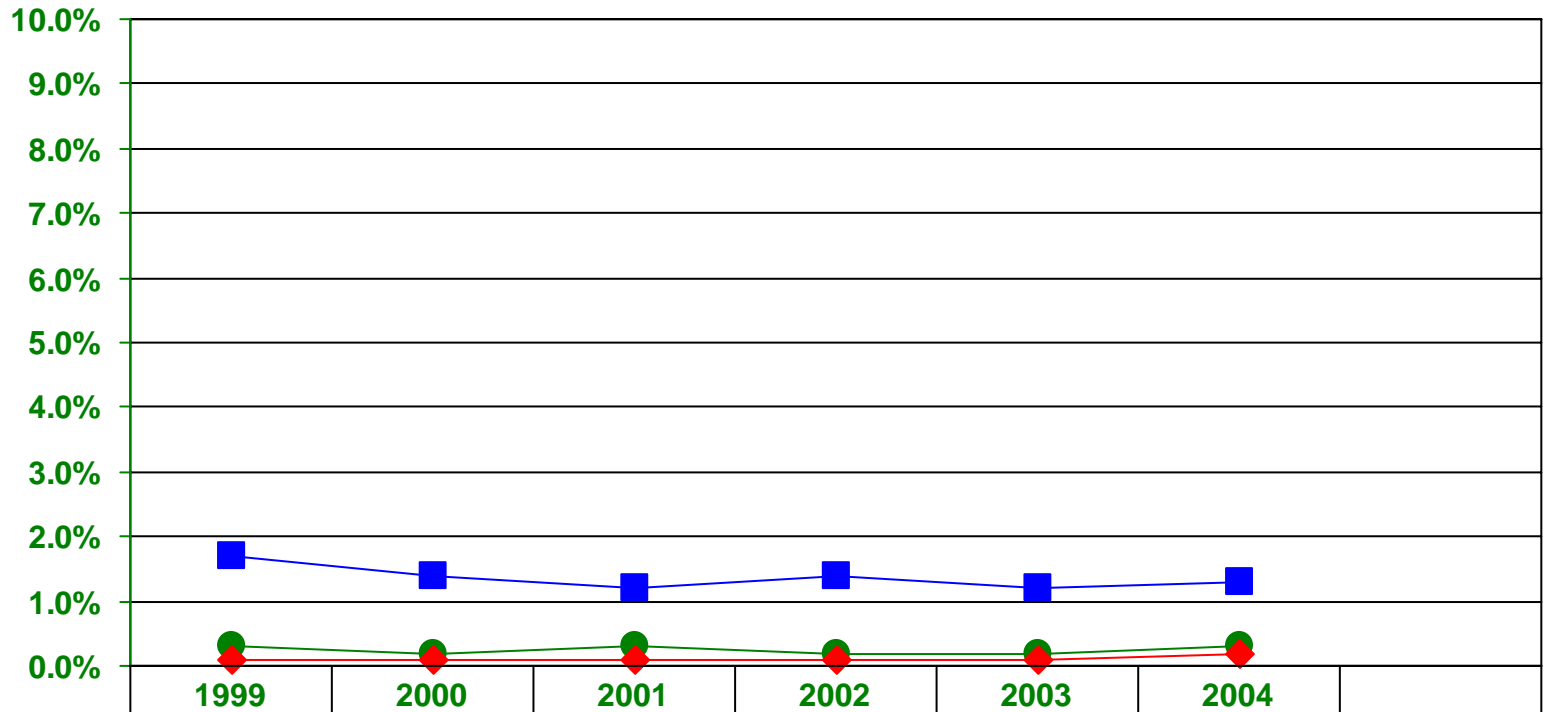


■ SSI	5.7%	5.3%	6.7%	6.6%	6.1%	6.4%
● OASDI/SSI	0.7%	0.5%	0.6%	0.6%	0.7%	0.9%
◆ OASDI	0.2%	0.1%	0.1%	0.1%	0.2%	0.5%

\*

\* Combined error dollars as a percent of combined outlays.

# Improper Payment Rates For Underpayments



■ SSI	1.7%	1.4%	1.2%	1.4%	1.2%	1.3%
● OASDI/SSI	0.3%	0.2%	0.3%	0.2%	0.2%	0.3%
◆ OASDI	0.1%	0.1%	0.1%	0.1%	0.1%	0.2%

\* Combined error dollars as a percent of combined outlays.